



# LCP LYCORPANEL<sup>®</sup> Plus

Metal Wall, Fascia, Soffit & Ceiling



Integrity In **Partnership**



# LCP LYCORPANEL® PLUS

## FEATURE

**LCP LYCORPANEL® PLUS** offers a new enhanced profile feature. The use of striations with subtle linear ribs provide a sleek contemporary panel ideal for wall, fascia, soffit and ceiling applications.

- ▶ Economical design solutions.
- ▶ Can be installed vertical, horizontal or angled.
- ▶ Aesthetic flexibility in the choice of panels and widths.
- ▶ Allowing the designer creative options with multi-dimensional and modular freedom.
- ▶ Machine formed Striations provides greater panel stiffness minimising the possibility of wavy appearance
- ▶ Interlocking panels incorporating concealed fixings, installed in conjunction with **LCP Building Products** steel framing system.

## MATERIALS

The strength and formability of steel makes it an ideal material for roofing and wall panels. **LCP LYCORPANEL® PLUS** is a cold roll formed wall cladding manufactured from high strength steel of G300 base material (300MPa minimum yield stress), with ZINCALUME® steel (Zinc & Aluminium alloy) coating, in accordance with AS1397 and COLORBOND® prepainted steel in accordance with AS2728.

Colorbond® prepainted steel shall achieve CLASS '0' in accordance to BS 476 PART 6 & 7. The core material Zincalume® shall be non-combustible in accordance to BS 476 PART 4.

Other choice of materials such as Aluminium is also available. For more information, please contact **LCP Building Products Pte. Ltd.**

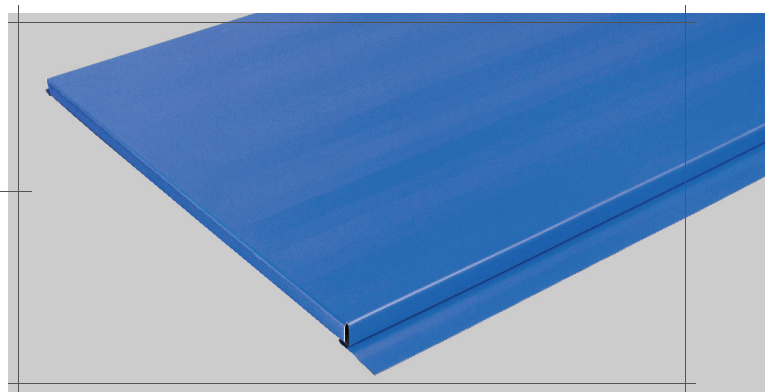
## ADVERSE CONDITIONS

If **LCP Building Products Pte. Ltd.** range of walling, roofing or rainwater products are to be used within 1km of salt marine or industrial and unusually corrosive environments, please contact our Technical Department for advice.

## WEIGHT TABLE

LCP LYCORPANEL® PLUS - Effective Cover Width & Weight Table			
MATERIAL	THICKNESS* (mm)	COVER WIDTH* (mm)	MASS PER UNIT AREA (kg/m <sup>2</sup> )
COLORBOND® in G300	0.61	500	5.53
Rheinzink® Titanium-zinc	0.70	500	6.05
Copper	0.70	500	7.50
Aluminium	0.80	500	2.89

\*: Depending on material selection, other thickness and cover widths are also available. Please consult LCP Building Products Pte. Ltd., for more information.



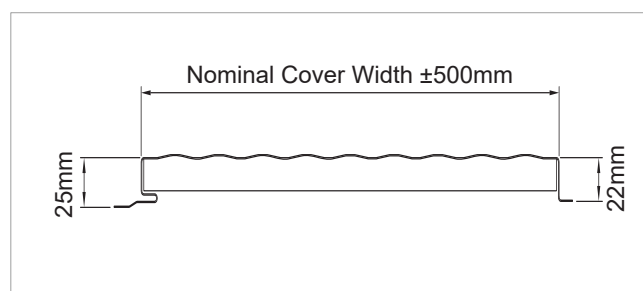
The versatility of new **LCP LYCORPANEL® PLUS** with striations including the added benefit of notching and bending, provides a more rigid and stronger panel.

## SUPPORT BATTENS

The battens are used as support for fastening **LCP LYCORPANEL® PLUS**. These support battens can either be a flat, Z-shape, or top hat section. Depending on the material selected for **LCP LYCORPANEL® PLUS**, please consult **LCP Building Products Pte. Ltd.** on its compatibility with the support battens.

## COMPATIBILITY

Lead flashings should not be used in conjunction with ZINCALUME® steel or COLORBOND® prepainted steel sheeting. Drainage from ZINCALUME® or COLORBOND® prepainted steel roofing (inert materials) should not be allowed to discharge onto galvanised rainwater components. Drainage from copper roofing should not be allowed to discharge onto ZINCALUME® steel, galvanised, COLORBOND® prepainted steel or aluminium rainwater components. Each of these combinations may lead to premature corrosion.



## ARCHITECTURAL SPECIFICATION

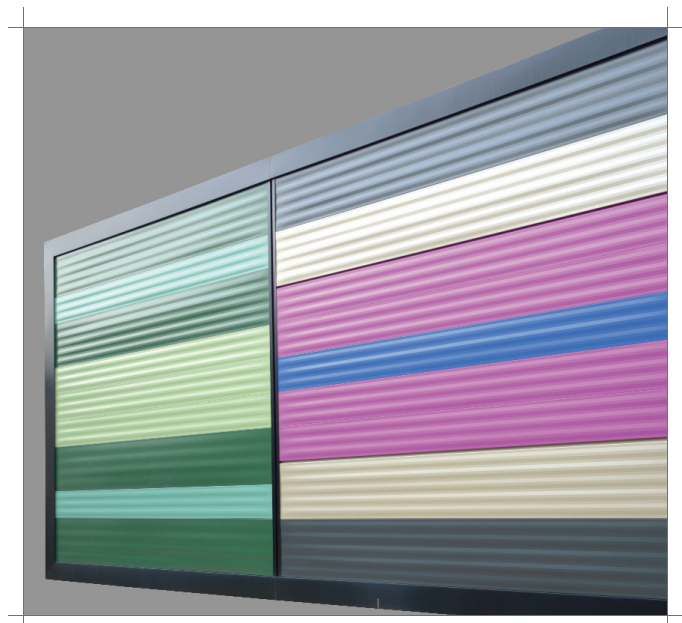
The wall cladding metal sheets shall be 0.55mm BMT **LCP LYCORPANEL® PLUS** produced by LCP Building Products Pte. Ltd. The nominal cover width of **LCP LYCORPANEL® PLUS** is 500mm. Other cover widths are also available. Depending on the desired design, a gap between each panel can range from 0mm up to 25mm with appropriate dimensions of the concealed internal flange. The depth of the panel will be 25mm. The panel can be orientated vertically, horizontally or diagonally depending on the desired design. The fixings shall be concealed, giving a neat appearance. **LCP LYCORPANEL® PLUS** must be fixed to structural framework and/or sub-girts spaced at appropriate distances. For more information on these distances, please contact LCP Building Products Pte. Ltd., Technical Department. The fasteners used to secure the **LCP LYCORPANEL® PLUS** shall conform to Australian Standard AS3566 and be compatible with the cladding material used.

The sheeting material shall comply to Australian Standard AS1397 with a minimum yield stress of 300MPa (Grade G300), metallic hot-dip coated with zinc/ aluminium alloy- coated steel comprising 55% aluminium, 43.5% zinc and 1.5% silicon. The minimum coating mass for the zinc/aluminium alloy - coated steel shall be AZ200 (200 g/m<sup>2</sup> minimum coating mass) as determined by Australian Standard AS1397.

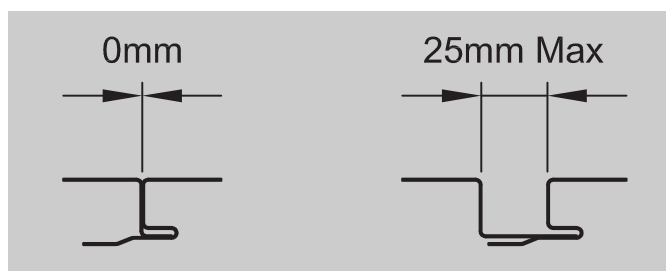
**LCP LYCORPANEL® PLUS** shall be fixed in a workman like manner, leaving the job clean and weather-tight. All debris (nuts, screws, cuttings, filings etc.) shall be cleaned off daily.

### MATERIAL CHOICES

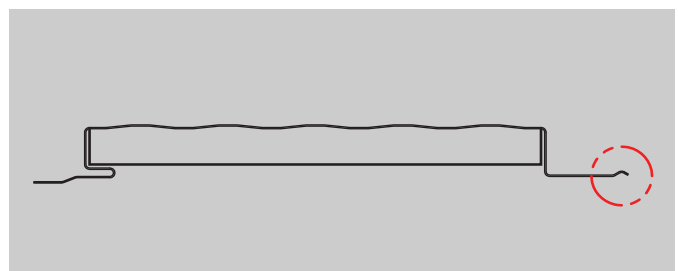
1. COLORBOND® pre-painted steel combines the superior strength of steel, the corrosion protection of a zinc/aluminium alloy (Zincalume® steel) coating and the high performance beauty of an oven cured paint system which is remarkably resistant to chipping, cracking, peeling and fading. It also resists dirt staining.
2. Other non-ferrous choice of materials such as Aluminium, Titanium Zinc and Copper are also available. For more information, please contact **LCP Building Products Pte. Ltd.**



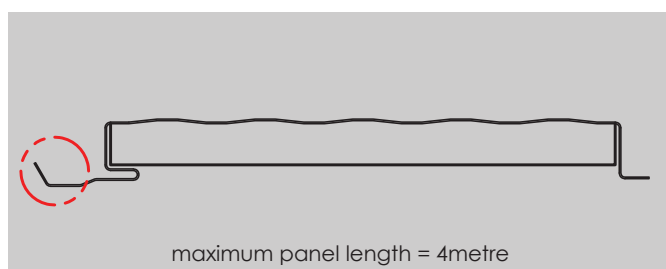
### OPTIONS:



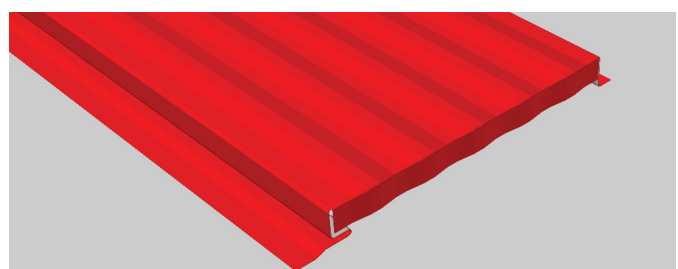
Panel Side Gap



Tongue Nib



Bending of Fixing Strips



Pan-End Notching & Bending



# MANUFACTURING and CONSTRUCTION

## ORDERING

When ordering, please have the following information available to ensure a speedy processing of your requirements:

- ▶ Customer/Company name, address, phone number & fax number.
- ▶ Contact person name & phone number
- ▶ Name of Product (e.g. **LCP LYCORPANEL® PLUS**) and material (e.g. G300 steel). Thickness of product (e.g. 0.61mm TCT).
- ▶ Coating or Colour (e.g. Clean **COLORBOND®**: Enduring White colour).
- ▶ Number/quantity and length of sheets (e.g. 10 pieces of 5 metres length per piece)
- ▶ Flashing – style, quantity and colour.
- ▶ Delivery address (e.g. No. 10 Telok Kurau Lane, Singapore).
- ▶ Delivery date & preferred time
- ▶ Site access (please specify whether current access to delivery location would permit entry by standard 12 metres length flat-bed trailers).
- ▶ Cranage requirement (please specify whether crantage will be required at site).

## LENGTH

The sheets are manufactured at **LCP Building Products Pte. Ltd.** factory. The length of the sheet is a function of design requirements, geometry of the wall, site conditions and workability and transportation constraints.

Lengths specified must be actual site measurements and not plan dimensions. The length should be measured accurately, and allowance should be made for clearance at the ridge (unless the sheet is continuous over the ridge) of normally around 50mm. At the eaves, the overhang allowed for into the gutter which is normally not less than 50mm. Where a "step down" or expansion joint is incorporated into the roof an allowance of not less than 300mm should be added. The tolerance of the length of product supplied is +0, -15mm.

## FLASHING

Standard flashings are readily available for use with **LCP LYCORPANEL® PLUS** wall, fascia, soffit and ceiling panel. **LCP Building Products Pte. Ltd.** will give design advice for flashing details and manufacture the required flashing.

## DELIVERY

Delivery can normally be made within 2 or 3 days, subject to the delivery location and material availability, or can be at a pre-arranged date and time. Please assist us to provide undamaged product by ensuring that suitable arrangements have been made for truck unloading. When lifting sheeting by crane, care should be taken to ensure that the load is spread to prevent sheeting damage. Where a crane is not available, sufficient labour must be supplied to assist in manual unloading.

## HANDLING

**LCP LYCORPANEL® PLUS** (especially Clean **COLORBOND®**) should be handled with care at all times to preserve the quality of the finish. Packs should always be kept dry and stored above ground level whilst on site. If however the sheets have become wet then they should be separated, wiped and placed in the open to aid in drying.

## FASTENERS

All fasteners should conform to AS3566 and be compatible with the wall cladding material used. A suggested fastener is Buildex 10-16 x 16 WAF.

## CUTTING

Sheeting can be cut, where necessary, by means of metal snips or electric nibbler. The use of cutting discs should be avoided but if it is used, the Clean **COLORBOND®** prepainted steel sheeting should be placed downwards, or carefully shielded, to minimize the risk of hot filings embedding in the painted surface.

## CLEAN UP

Ensure that all debris, nails, rivets, screws, rags, and especially filings & particles from cutting or drilling, are carefully cleared from the surface after each day's work or premature corrosion could occur.

## OIL CANNING

As in all flat pan-cladding profiles, the flat surfaces of the metal sheets may exhibit some degree of undulation known as "oil canning". The extent and degree of oil canning will generally depend on factors such as width of the flat pan, the radius of the curved roof, variations in level of the purlins or batten supports, etc. Please note the oil canning is regarded as an inherent characteristic, not a defect of flat pan roofing profiles. As such, oil canning of **LCP LYCORPANEL® PLUS**, if present, shall not form the basis of product rejection by the end-user.

**IMPORTANT NOTE:** The information published in this brochure is as far as possible accurate at the date of publication, however, prior to application in a particular situation, **LCP Building Products Pte. Ltd.** recommends that you obtain qualified expert advice confirming the suitability of product(s) in question for the application proposed. While **LCP Building Products Pte. Ltd.** accepts its legal obligations, be aware however that to the extent permitted by law, **LCP Building Products Pte. Ltd.** disclaims all liability (including liability for negligence) for all losses and damages resulting from the use of the information provided in this brochure.



**LCP BUILDING PRODUCTS PTE. LTD.**  
CO. No. 200009173 C

No. 6 Gul Circle, Singapore 629562

Tel: (65) 6865-1550 Fax: (65) 6861-4218  
Email: lcp@lcp.sg website: www.lcp.sg

**LCP BUILDING PRODUCTS PVT. LTD.**  
(CO. No. U28112 TN2004 PTC053236)

Old No.6, New No.17, 4th Floor,  
Viswanathapuram Main Road,  
Kodambakkam, Chennai – 600 024, India

Tel: + 91-44 -298 92772  
Fax: + 91-44 -298 92772  
Email: lcpindia@lcpgroup.asia  
website: www.lcpindia.com

Photographs of the premises displayed in this Brochure are not to be construed as an endorsement or recommendation by the owners of the premises to LCP and its products.

**LCP LYCORPANEL® PLUS** Brochure 09/17 ©2017  
LCP Building Products Pte. Ltd. All rights reserved.

**LCP LYCORPANEL® PLUS** Brochure 09.2017 edition.

**ZINCALUME®**, **COLORBOND®** and Clean **COLORBOND®** are registered trademarks of **BLUESCOPE STEEL LIMITED**

**RHEINZINK®** is a registered trademarks of **RHEINZINK GMBH & Co. KG**