



# LCP - RAL COLOURS



RAL 5002 [18.37] (1.48)  
(Smashing Blue)



RAL 7024 [8.85] (1.73)  
(Graphite Grey)



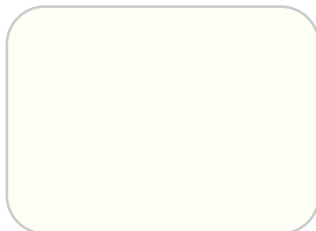
RAL 7038 [48.05] (1.61)  
(Ultimate Grey)



RAL 7047 [47.17] (1.84)  
(Telegrey)



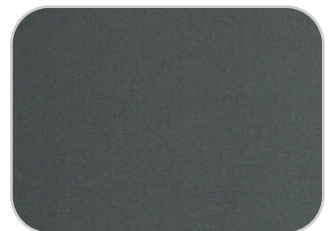
RAL 9007 [32.10] (5.59)  
(Grey Aluminium)



RAL 9010 [80.20] (-1.08)  
(Pure White)



RAL 9023 [30.17] (5.22)  
(Pearl Dark Grey)



F500-30016CE [11.27] (2.08)  
(Galaxy Night)

**Note:** [##] Total Daylight Reflectance (%)

(##) Specular Daylight Reflectance (%)

## REGULATION ON DAYLIGHT REFLECTANCE OF MATERIALS USED ON EXTERIOR OF BUILDINGS

Daylight reflectance, which is the sum of specular reflectance and diffuse reflectance, is the measurement of the percentage of visible light that is reflected off a material. The daylight reflectance of materials for building works is regulated in view of the potential disamenity caused by sunlight reflected off a building.

The material used for the building work is deemed acceptable if -

For use of pre-painted aluminium for facade

- (i) the facade of the building has a specular reflectance not exceeding 10%
- (ii) the roof of the building, inclined at an angle not exceeding 20 degrees from the horizontal plane, has a specular reflectance not exceeding 10%
- (iii) the roof of the building, inclined at an angle more than 20 degrees from the horizontal plane, has a daylight reflectance not exceeding 20% and a specular reflectance not exceeding 10%

(BCA Ref : BCA Approved Document Version 7.02A Section P.3.2)

## AA3004 / AA3105

This is a common alloy with moderate strength.

Material can be supplied in the mill, painted and stucco embossed finishes.

PREFERRED SUBSTRATE	Aluminium Alloy 3004 or Aluminium Alloy 3105
PRETREATMENT	Corrosion resistant proprietary conversion coating
PRIMER COAT	Universal corrosion inhibitive primer. Normal dry film thickness 5µm each side
FINISH COAT	Custom formulated 70% PVDF KYNAR® 500 / HYLAR® 5000 paint system with high performance pigments. Nominal dry film thickness 20µm on the top or weather side.
BACKING COAT	Custom formulated Light Grey. Nominal dry film thickness 5µm
COLOUR	A range of standard RAL colours are available. Other customize colours may be available on request.

### Mechanical Properties (in weight %)

Alloy and Temper	Proof (MPa)	UTS (MPa)	% Elongation	Bend Radius
	(minimum)		(minimum)	(90 ° bend)
3004 H42	130	185 - 240	5%	0T
3004 H44	180	210 - 265	4%	1T
3004 H46	200	230 - 285	4%	1T
3105 H42	105	130 - 180	6%	0T

### Physical Properties

Property	Value	Unit
Density at 20° C	2.72	g/cm <sup>3</sup>
Melting Range	630 - 655	°C
Thermal Capacity	840	J/kg °C
Thermal Conductivity	163	W/m °C
Thermal Expansion	23.9 x 10 <sup>-6</sup>	/ °C
Resistivity at 20° C	42	nΩm
Modulus of Elasticity	69	GPa
Modulus of Rigidity	24.5 - 26.5	GPa

### Corrosion resistance

Moderate-Good to Good corrosion resistance

### Formability

Has good formability. Suitable for roll forming and fabrication.

### Weldability

This product can be welded by MIG, TIG, LASER and high frequency methods.

### Applications

- General engineering products requiring moderate to high strength.
- Building products
- Roofing and cladding products
- Rain water goods.

**NOTE:** The colour shown in the leaflet has been reproduced to represent actual product colours as accurately as possible. However, we recommend you check the chosen colour against actual sample of the product before purchasing as varying light conditions and limitations of the printing process affect colour tones.



**LCP BUILDING PRODUCTS PTE. LTD.**  
CO. No. 200009173 C

No. 6 Gul Circle, Singapore 629562

Tel: (65) 6865-1550 Fax: (65) 6861-4218  
Email: lcp@lcp.sg website: www.lcp.sg

**LCP BUILDING PRODUCTS PVT. LTD.**  
(CO. No. U28112 TN2004 PTC053236)

Old No.6, New No.17, 4th Floor, Viswanathapuram Main Road,  
Kodambakkam, Chennai – 600 024, India

Tel: + 91-44 -298 92772  
Fax: + 91-44 -298 92772  
Email: lcpindia@lcpgroup.asia  
website: www.lcpindia.com

Photographs of the premises displayed in this Brochure are not to be construed as an endorsement or recommendation by the owners of the premises to LCP and its products.

**LCP COLOUR CHART 07/20** ©2020 LCP Building Products Pte. Ltd. All rights reserved.

**LCP COLOUR CHART 07.2020** edition.